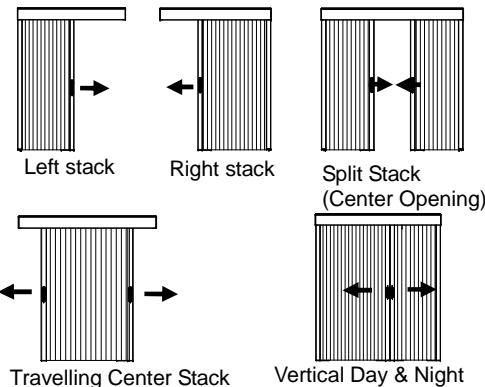


**65101-10121-E**  
**Read the instruction before**  
**operating your shade**

**Installation & Maintenance Instructions**  
**Honeycomb Shades**  
**Patio Door Vertical & Vertical Day & Night**



**Getting Started**

Remove the shade from the package. Save the packaging until the shade is installed and working to your satisfaction.

**Tools Needed :**

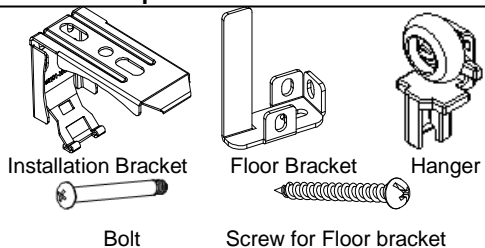
- Power drill and drill bit
- Measuring tape
- Screwdriver
- Level
- Pencil



You will need to use the following fasteners for your particular mounting surface.

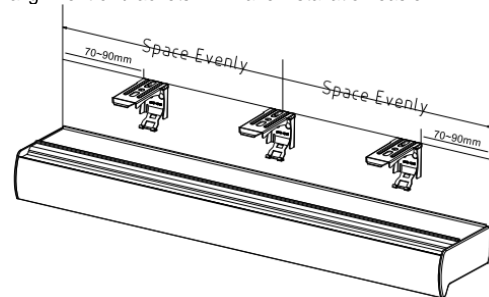
Surface	Fastener
Wood	Screws (Provide)
Drywall/Plaster	Wall Anchors, Expansion Bolts (Not Provide)
Metal	Sheet Metal Screws (Not Provide)

**Check Component/Hardware:**



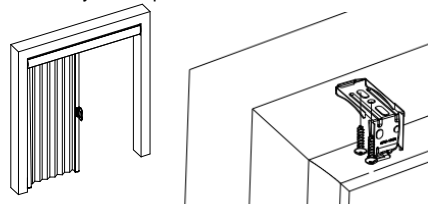
**Step 1: Bracket Installation**

Measure 70mm ~90mm from both ends of the head rail. Mark the bracket location on the mounting surface, proper alignment of brackets will make installation easier.



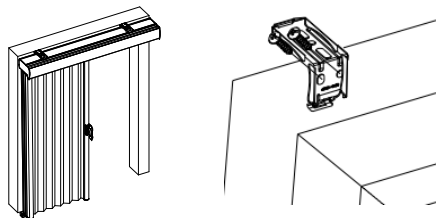
**Inside Mount:**

Align the front of brackets flush against the wall. Use two mounting screws to secure brackets. Use wall anchors for drywall or plaster wall.



**Outside Mount:**

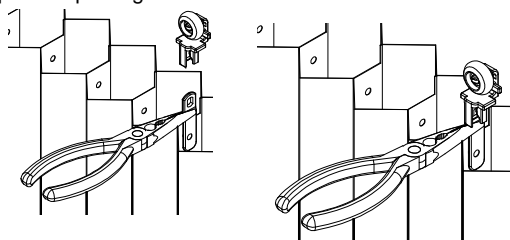
Position the top of bracket at order height + 3mm. Use two mounting screws to secure brackets. Use wall anchors for drywall or plaster wall.



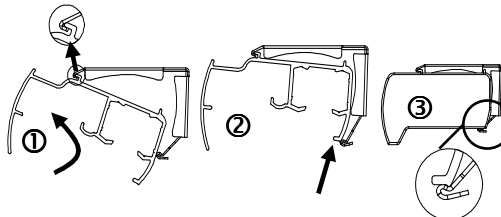
**Step 2: Shade Installation**

a. Assemble the clips (pre-attached on the blanket) into hangers (find in hardware box) by using pliers as below photo.

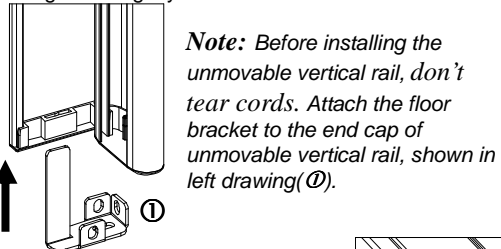
For convenient operation, reverse the shade when open the package and face to the back of blanket.



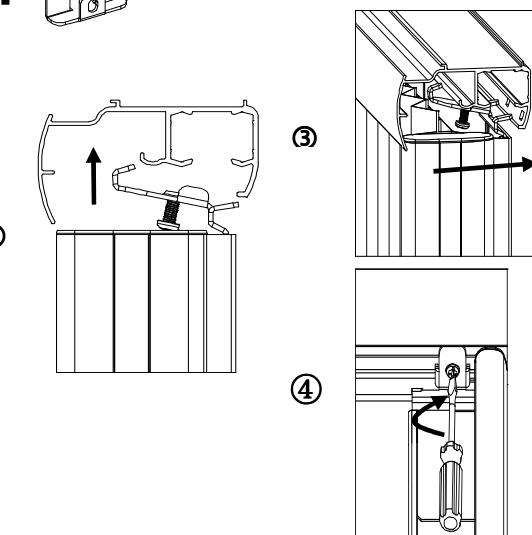
b. Position head rail at an angle so that it is hooked to the front of the bracket. Then push it upward to snap into the bracket as shown below.



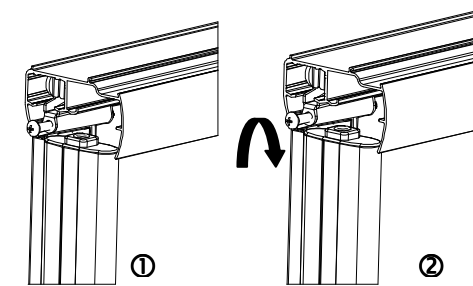
c. Install unmovable vertical rail. Push the unmovable vertical rail from down to up as below drawing ②. And then, push the fixing hanger into the gap of headrail as drawing ③. Locking the fixing hanger bolt tightly.



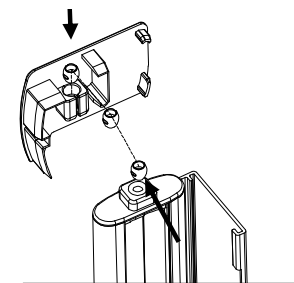
*Note: Before installing the unmovable vertical rail, don't tear cords. Attach the floor bracket to the end cap of unmovable vertical rail, shown in left drawing (D).*



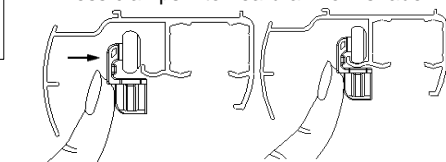
d. Install movable vertical rail. Align the hanger shaft hole with the sliding supporting shaft hole, and insert the bolt into the shaft hole completely (①). Screw the bolt tightly clockwise (②).



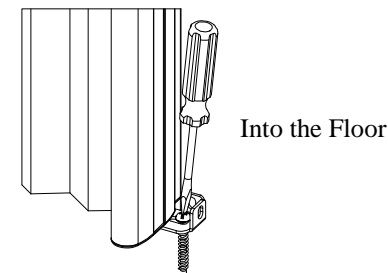
e. Tear the cords. Put the buckle bead into groove of headrail end cap (make sure the bead buckle from groove top down) as drawing.



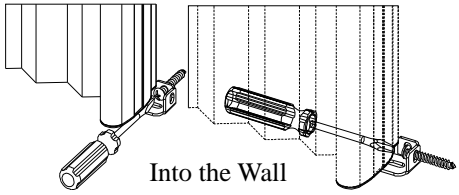
f. Press clamps into headrail from shade front



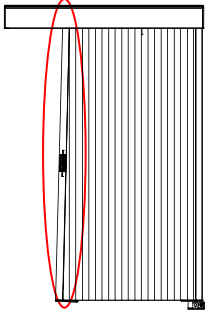
g. Attach the screw of Floor Bracket into the floor or wall shown below. Floor Bracket has been pre-attached to the end cap of unmovable vertical rail



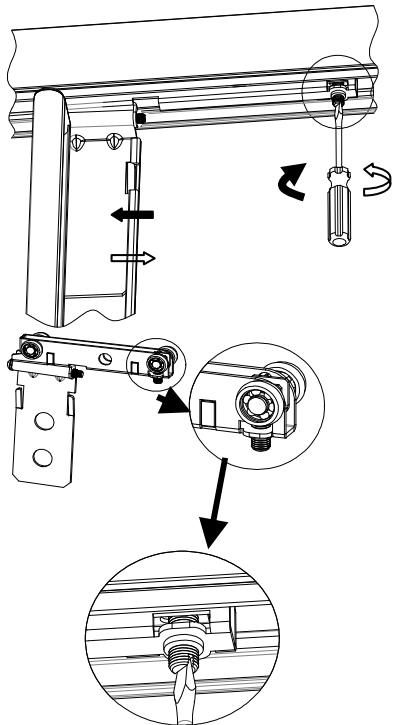
Into the Floor



h. If the vertical rail is not perpendicular to the floor, adjustment is necessary.

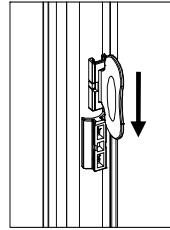


Not perpendicular



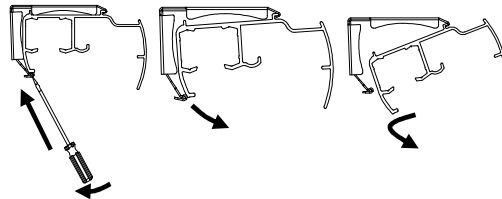
### Step 3: How to Install Shade Handle

Slide the handle onto the plastic piece pre-attached to the rails.



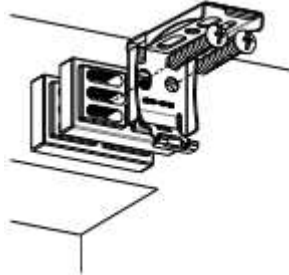
### Step 4: Remove the shade

Please use the reverse steps of installing vertical rail and shade to remove the vertical rail and shade. Gently pry the bracket off the head rail with a flat screwdriver as below drawing.

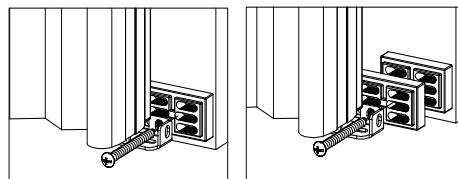


### Installation of spacer block (for OB)

**Spacer block:** Install the spacer block (1pc or 2pcs) at the backside of the installation bracket as below pictures. Extend up to 10mm for 1pc spacer block. Extend up to 18mm for 2pcs spacer block.



**Spacer block:** Install the spacer block (1pc or 2pcs) at the backside of the Floor bracket as below pictures. Extend up to 10mm for 1pc spacer block. Extend up to 18mm for 2pcs spacer block.



 Extension bracket & Spacer block will be provided only when customer request.

### Troubleshooting

Problem	Solution
When the cord is loose, adjustment is necessary. a. Remove the buckle bead from the headrail end cap. b. Remove the cord knot from the buckle, readjust the cord length and tie a knot. Put back the buckle bead into the headrail end cap. Do not over tight.	